



Annual Report

2012



Kenai Peninsula College
UNIVERSITY of ALASKA ANCHORAGE



Director's Welcome



Gary J. Turner
KPC Director

The past year has been a historic one for KPC as you'll read about in this Annual Report. We continue to grow and better serve our region every year because of our dedicated faculty and staff who do so much to provide students with quality education and training. But, it takes more than that.

We could not do all these wonderful things without the public's support. This ranges from our state legislators to the Kenai Peninsula Borough mayor and assembly, and the towns that consider us "their" college (and we're glad they do). The continuing support from our neighbors is ever present on our campuses and extension sites, and the various communities we serve, including Anchorage.

Probably the most noticeable thing over the past year has been the construction of student housing and the Career & Technical Center (CTC) at

the Kenai River Campus. The landscape and campus personality will be forever changed when these two buildings come on line in August 2013. Having 96 students living in the \$17.8 million dorm will change the complexion of our commuter campus to one where students eat, sleep, take courses, finish degrees, socialize and make lifelong friends. Becoming a residential campus is a very big deal and we are preparing for it.

The \$15.25 million CTC will be a world class training facility for process technology, instrumentation and computer electronics. We will expand the use of the facility in the summers by working with industry to support short-term training for their employees who will be able to stay in our student housing. Lots of opportunities are waiting for us and we'll be ready.

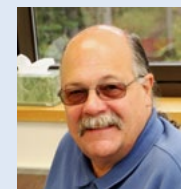
Completion of the buildings does not signal an end to the renovation.

Like dominos, the spaces vacated on campus will be used to provide additional room for paramedicine, nursing and art. Faculty offices will be combined into one area and other offices will relocate over the next three years. By 2016, most of the campus will be unrecognizable due to all the changes we have planned.

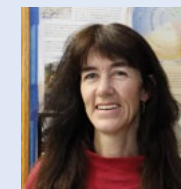
While physical infrastructure is important, it is the resources inside the buildings that make the difference and are the key to success. You will read about all the accomplishments of our faculty, staff and students in the following pages. It is quite a volume so take your time and learn about all the wonderful things your college is doing, in large part due to your support. Now turn the page and learn about what we've done over the past year.



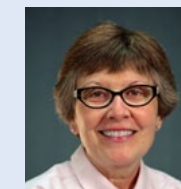
New Faces at KPC



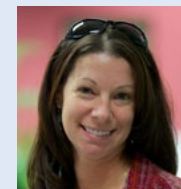
Steve Horn
KRC assistant professor of business



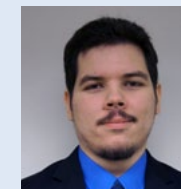
Dr. Catherine Knott
KBC assistant professor of anthropology



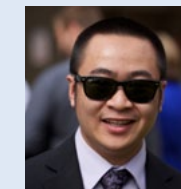
Barbara Patrick
KRC maintenance service worker,
KRC facilities



Amanda Webster
KRC Learning Center assistant
proctor



Robert Lewis
KRC IT desktop lead



Spring Sibayan
Learning Center, Library and IT
technical specialist

Accomplishments

KPC's faculty promotions and appointments

Dr. Debbie Tobin promoted
Kachemak Bay Campus professor Debbie Tobin was promoted to associate professor of biology and granted tenure.

Jeff Laube appointed
Kenai River Campus professor Jeff Laube was appointed as a tenure track assistant professor of process technology.

Contributing to the community and the state



Left: KRC Student Union sponsored a Mardi Gras-themed spring celebration complete with a crawfish boil for students, staff and faculty.

Right: KPC Director Gary Turner briefs the UA Board of Regents during their April 12-13 meeting at the Kenai River Campus.



One of Kenai Peninsula College's strategic plan core themes is to utilize the campuses as public squares for the communities served.

The Two-Year College English Association of the National Council of the Teachers of English named KPC the winner of the 2012 Diana Hacker TYC Award for Outstanding Programs. The college's "Interdisciplinary Service-Learning: Making Connections in Art and Writing for Community Concerns" was selected as the exemplary program in the category of Reaching Across Borders.

In recognition of Alaska Book Week, KBC held a panel discussion on Oct. 21 with five writers discussing books that influenced them and their writing. More than 40 people attended.

KBC's six Phi Theta Kappa honor society students sponsored a two-month long food drive in the fall semester to support the Homer Community Food



Left: KRC Student Union President-elect Rick de Mello smiles for the camera as he helps prepare the crawfish for the boiling pot.

Pantry. Drop-off sites included the campus and two local grocery stores. With their busy schedules, they organized this project by communicating almost entirely through a Facebook group.

Sixteen members of the KRC Learning Center (including employees, family members, volunteers and students) contributed 48 hours of their time to help families in the Rural Cap's Owner-Built Program in Kenai in October.

KPC's Kenai River Campus hosted its 11th annual Welcome Back Barbecue on Sept. 1. A record 500+ community members enjoyed roast pork, hamburgers, hot dogs, salads and desserts made by KRC faculty, staff and students. KRC purchased the 260 lb. hog during the annual 4-H auction at the Kenai Peninsula State Fair and Carrol Martin, local rancher roasted it on campus.

KRC's service-learning project, "Harvesting the History of Work" reached a crescendo on March 30, as the exhibit showcasing the efforts of KPC art, English and communications students at the Kenai Visitors and Cultural Center opened with a reception that drew more than 100 community members. The exhibit investigated the scope of the "world of work"—including local histories, personal legacies and traditions, and unique aspects of living and working on the Kenai Peninsula. Thirty-four paintings and surface design pieces were on display, and narratives about the work were presented with each piece. Essays on particular industries and their histories on the Peninsula were scattered among the exhibit, and relevant local artifacts from the KVCC archives and Kenai Historical Society were presented and showcased.

KPC's Career and Community Engagement Center and the KPC Service-Learning Faculty Scholars Program hosted two workshops on April 3—one for faculty and one for students. Dr. Patti H. Clayton, with Purdue University-Indianapolis, and the New England Resource Center for Higher Education, and formerly founding Director of the Center for Excellence in Curricular Engagement at North Carolina State University provided a workshop on "Critical Reflection for Learning & Assessment" for faculty. Kathleen Edwards, a Ph.D. student in Educational Leadership and Cultural Foundations at the University of North Carolina at Greensboro, discussed with KRC students how personal storytelling and social construction interacts with broader social and cultural issues and impacts student community engagement.



KPC's founding Director Clayton Brockel joined current Director Gary J. Turner in his 1961 Dodge Power Wagon as part of the KPC contingent in the 2012 Soldotna Progress Days parade.

Collaborating with the school district



Left: Kenai Peninsula Borough School District Assistant Superintendent of Instructional Services, Sean Dusek and KPBSD Board Vice-President Liz Downing address the UA Board of Regents at their April meeting at KRC.

Right: KBC hosted a popular College, Career and Job Fair in April that had more than 300 attendees.

Liz Downing, KPC Title III project director, was presented the 2011 "National Distinguished Board Member" award from the National School Boards Association at the Nov. 3-6 Alaska Association of School Boards conference in Anchorage. The Kenai Peninsula Borough School District board received the AASB's "2011 Outstanding School Board of the Year" at the conference.

KPC had 130 JumpStart students in the fall 2011 semester, taking 776 credits. This is a decrease of two students and an increase of 121 credits over fall 2010 numbers.

Kim Frost, KBC's Student Services Coordinator, increased outreach efforts to local KPBSD Connections High School's seniors and juniors. Students received individual invitations to come to campus and meet with UA and KBC campus recruiters. The first quarterly "Preparing for College" newsletter was sent to all Connections juniors and seniors as well as Homer High School students.

Leigh High spent three days (about 45 minutes each day) at Mountain View Elementary School before the semester started talking to 4th grade students about what it is like to be a geologist. By the end of day 3, students had a very good idea of what it may be like to be a geologist, and they learned some science and math in the process.

Dr. Peter Snow, KRC's new assistant professor of education, continued his work placing education degree students with the school district. He placed 10 elementary ed students enrolled in EDEL A205 (Becoming an Elementary Teacher) from two Anchorage sections and one Kodiak section in KPBSD schools from Homer to Soldotna for a 20-30 hour field experience.



Collaborating with industry and other partners



Left: KPC's welding program continues to attract students from around the state for the high quality instruction it's known for.

Right: Jeff Laube, assistant professor of process technology, explains the control array at the moth-balled Agrium facility in Nikiski.



KPC depends on the relationships it forges with community and industry partners to strengthen and enhance the college's courses and degree programs.

KBC hosted the College, Career and Job Fair in Homer on April 6. Approximately 350 attendees spoke with more than 20 employers and listened to presentations on Alaska's high-growth jobs, apprenticeship opportunities and how to pay for college.

The central Kenai Peninsula's 9th annual Job and Career Fair was held March 28 at the Soldotna Sports Center. KPC hosted a booth with seven rotating staff and faculty volunteers talking to many of the 736 attendees.

KRC held its 6th annual Community Health Fair on Feb. 15 that attracted more than 300 participants to the 30 health exhibitors on campus. Sixty people had blood drawn for multiple lab screenings, and hearing, vision and bone density tests were also conducted.

Assistant professors of English, Dr. Cheryl Siemers and Scott Downing are focusing on structuring and creating self-paced online modules that will help students achieve outcomes associated with various levels of preparatory English.

KPC and Montana State University signed an articulation agreement enabling graduates of KPC's Anchorage Extension Site Occupational Safety and Health degree program to have all their credits transferred and counted toward the first two years of the Montana State OSH 4-year degree.

In early December, the new Renewable Energy Production & Operations class (PRT A294) went on a field trip to the Cooper Lake Hydroelectric facility in Cooper Landing. The students were guests

of Chugach Electric Association. This was a very educational tour as the students were able to view the process side of "renewable energy" in action in the form of hydroelectric power. The Chugach representative was very helpful answering all questions and explaining in detail what a dam operator would do and how to become employed in the power generation industry.

KPC and UAA's Community and Technical College, received a \$2.5 million federal grant called "Beyond Anchorage." The CTC's Architectural Engineering Technician (AET) AAS degree program, KPC's developmental faculty and Dr. Paula Martin, KPC assistant director for academic affairs, will develop the program to increase student workforce readiness in a two-year degree program, particularly for displaced workers. KPC's role is three-fold:

- Create self-paced, online, developmental modules (English, mathematics and instructional technology) freely available to anyone, to aid with students becoming college-ready more quickly. The modules will include examples from the workplace (architecture, engineering, construction, and CADD) to help increase engagement with the students and the material.
- Oversee a "developmental bootcamp" to aid a student cohort through the modules and to help prepare them for a solid start.
- Be one of five sites for distance delivery of the AET degree.

The Oil & Gas Exploration and Production class took a tour in November to Nabors Drill Rig 105 which is working at the Cannery Loop field in Kenai. Keith Carter, the rig manager, conducted the two-

hour tour giving the students an in-depth explanation of drilling. The rig was actively drilling so the students were able to view drilling taking place from the rig drilling floor.

In November, the Process Technology Operations class spent almost four hours touring the Tesoro Crude Unit, Hydrocracker Unit and support units for these processes. Allan Casperson graciously led the students through the snow and wind on a very informative presentation on the refinery process. The refinery operators also spent time in the control room speaking with the students and answering their many questions.

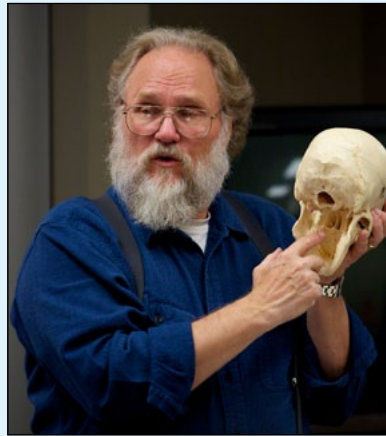
Kenaitze Indian Tribe Educational Services partnered with the KRC Learning Center at the tribe's administration office, which offered a variety of student services in the spring semester. These included financial aid resources, GED advising and employability skills.

The PRT A160 Oil and Gas Class had representatives from Apache Alaska Corp., a relatively new exploration company in the state, make a two hour presentation about oil exploration in Cook Inlet and possibilities for future oil production.



KRC hosted its 22nd annual career exploration event that is aimed at Kenai Peninsula high school students, college students and members of the public. More than 90 professionals representing 60 career fields presented occupational and education information to more than 230 attendees from around the Central Peninsula. (Pictured) BP recruiter JoAnna Tomuro Levens.

Faculty and staff Accomplishments



Dr. David Wartinbee, KRC biology professor, continues to write articles for the Redoubt Reporter newspaper. One article was about a large red mass of aquatic mites he observed on East Mackey Lake. He contacted a number of experts on mites and they were quite surprised with the sudden appearance of the larval mites. He has shared specimens with them as well as the various pictures he took of the event. These experts have asked to use some of the pictures in a book on the ecology of mites. Since that event, Wartinbee and several of the researchers have been making plans for a concerted collection of these tiny mites from a variety of areas in Alaska. He expects they will come to the area in the summer of 2014 as part of a large National Science Foundation grant that they have secured.

As a result of this research, Wartinbee was featured in the Scientific American blog, "The Artful Amoeba" in the story titled "Mystery of Alaskan 'Goo' Rust Solved at Last." Several of his photographs were used in the article.

Phillip Miller, KPC construction project manager, became one of 49 people in the world to earn the coveted Educational Facilities Professional Certification Credential. The Association of Physical Plant Administrators sponsors the credentialing program and is the professional association representing more than 4,700 facilities professionals at 1,500 learning institutions. Miller becomes just the second APPA certified educational facilities professional in the state of Alaska. The other is Chris Turletes, UAA associate vice chancellor of facilities and campus services.

Jeff Laube, KRC assistant professor of process technology, was notified that his distance delivered PRT A101 course was certified by the national Quality Matters program in fall 2011. "QM is a faculty-centered, peer review process that is designed to certify the quality of online and blended courses." Laube's course is the first distance class in the University of Alaska system to be QM-certified. His PRT A130 course was QM-certified in spring 2012.

Sara Reinert, KBC associate professor of math, attended the American Mathematical Association of Two Year Colleges annual conference in November.

Dr. Deborah Tobin, KBC assistant professor of biology, attended the National Conference on Marine Mammals in November. While there she also met with area universities to promote the Semester-by-the-Bay program.

Janice High, KRC associate professor of English, represented UAA at the annual meeting of the Pacific Northwest Canadian Studies Consortium in Seattle. Founded in 1986, The PNWCSC supports knowledge of the interconnection between Canada and the United States. It promotes and sustains cross border connections between universities through supporting teaching,

research and Canadian Studies projects. The PNWCSC includes more than 40 member institutions from Alaska, Alberta, British Columbia, Idaho, Oregon, Washington, and Yukon.

KRC's Advancement office produced a new television ad in-house thanks to the expertise of communications specialist Jesse Graves. New video cameras, editing software and computer equipment had been purchased to enable KPC to do video production. The commercial was broadcast for a month on KTUU-NBC Channel 2, KTBY-FOX Channel 4 and for two months on KACN-The Alaska Channel that is broadcast across the state on DISH network. The commercial voice over was done by KRC's Robert Lewis, a student and full time KPC employee in the IT department. To view the commercial, visit this link:

<http://youtu.be/9eNtHnWntFc?hd=1>

Dr. Pete Snow, KRC assistant professor of elementary education, had his article, "English in Panama," published in T. Hopkins and K. Decker (Eds.), *World Englishes - Volume 3 - Central America* (London: Continuum Publishing Group). The article examines the history of Panamanian Creole English, describes the grammar, phonology, lexicon and morphosyntactic characteristics of the variety, and considers the educational implications of the use of this Creole English variety in a country where Spanish is the national language.

Dorothy Gray, KRC assistant professor of English, attended the 3rd annual Quality Matters Conference in November in Baltimore. This nationally-recognized program concentrated on the many ways that institutions, individual faculty and instructional designers are using the Quality Matters rubric on college campuses across the U.S. and internationally.

Dr. Jane Haigh, KRC assistant professor of history, signed copies of her books on Dec. 3 at the Fine Arts Center in Kenai. Her books include "Gold Rush Women," "Gold Rush Dogs," "Searching for Fannie Quigley" and "King Con: The Story of Soapy Smith."

Dr. Heather Nash, KPC curriculum designer and Title III activities director, was certified as a Quality Matters "Master Reviewer;" the only one in the Alaska. QM is a faculty-centered, peer review process that is designed to certify the quality of online and blended courses. Master reviewers verify and review distance delivered courses to ensure they meet stringent QM standards.

Susan Mircovich, KRC assistant professor of chemistry, was informed that a number of her online CHEM A103 and A104 activities will be included in the new edition of the book, "Engaging the Online Learner."

Dr. David Wartinbee, KRC professor of biology, was the curator of the 2012 summer-long art show at the Kenai Visitors and Cultural Center. It was the largest wildlife art show ever held in Alaska with the very best wildlife artists in the world sending original paintings to this show. More than 100 paintings were on display by more than 48 artists. This show was bigger than the two wildlife art shows Wartinbee curated in 2000 and 2003.

Dr. Wartinbee contributed an article on Chironomid midges for the book, "Wading for Bugs," published by the University of

Oregon Press. The book was designed for younger readers to increase their understanding of natural history and aquatic ecology.

Dr. Cheryl Siemers gave a presentation at the Pacific Northwest Two-Year College Association meeting in Yakima, Washington on October 8.

Dr. Jane Haigh spoke to the Kenai Peninsula Historical Society about Gold Rush women on October 1.

Lolita Brache, KBC Adult Basic Education/GED instructor, was awarded the 2011 Educator of the Year award by the Alaska Adult Education Association at its annual meeting on October 7. Brache has taught ABE, GED and ESL students for 15 years at the campus and at villages across Kachemak Bay, Nikolaevsk and Voznesenka.

Clair Kochis, assistant professor of math, introduced the use of individual white boards for students in her Math A054 class as a fast and relatively stress-free formative assessment of understanding. This gave her instant feedback about concepts that are not well understood so she could address confusion immediately. These assessments replaced weekly graded quizzes because it seems to have a more beneficial impact based on the instantaneous feedback for both her and her students.

Geno Rohl, assistant professor of math, taught KPC's first engineering course in the spring. This enabled students to begin to prepare for an engineering degree while at KPC. Rohl will be offering additional lower division engineering courses next year.



Susan Mircovich, KRC assistant professor of chemistry, was named a winner of a Blackboard Catalyst Award for Exemplary Course Program, which honors faculty who design and develop exciting and innovative courses that represent the very best in technology and learning. Susan's CHEM A103 online course was one of six selected as a "Directors Choice for Courses with Distinction" from the 37 exemplary courses chosen selected from 151 international entries. Mircovich is the first UA faculty member to have a course selected for this recognition. She was honored during BbWorld®, Blackboard's annual user conference held in July in New Orleans.

Faculty and staff Accomplishments



KPC's Anchorage Extension Site process technology team, led by Assistant Professor Rick Adams (pictured second from left) took first place in the National Science Foundation's "Developing Students' Troubleshooting Skills in Energy Programs" national competition held April 21 at Northern Oklahoma College-Tonkawa campus. Student members of the team included (left to right): Daniel Christianson, Neil Richardson and Alex Kight. The KPC team will travel to Washington, D.C. in October to attend a two-day NSF-sponsored conference on simulation and troubleshooting. Of the eight competing teams, UAF's Community and Technical College finished second and South Central Louisiana Technical College placed third.

Dr. Alan Boraas, KRC professor of anthropology, and Dr. Catherine Knott, KBC assistant professor of anthropology, received a \$180,000 grant from the Environmental Protection Agency to undertake a cultural assessment of the importance of salmon and streams to the villagers of the Nushagak River, Kvigak River, Lake Iliamna, and Lake Clark area. Interviews, many in Yup'ik, were conducted in New Stuyahok, Nondalton, Pedro Bay, Iliamna, and Newhalen, Koliganok, Ekwok, Igiagik, and Levelok. This is part of a broader geological and biological assessment that will advise the director of the EPA whether or not to apply a section of the Clean Water Act (404c) to the area.

Dr. Boraas attended the Blessing of the Water Orthodox ceremony in New Stuyahok, Alaska to better understand the relationship between spirituality, water, and wild salmon subsistence January 18-21. Boraas and Dr. Catherine Knott gave a talk at UAA on "The Great Blessing of the Water: Spirituality in Southwestern Alaska" on March 30.

Dr. Catherine Knott formed a KBC Anthropology Group that met every Monday to view culturally-global films.

Celia Anderson had a solo exhibition of her paintings entitled "FLUX" at the UAA/APU Consortium Library in the Arc Gallery. The exhibition is "a kind of family portrait of individuals in a state of change."

Scott Downing, assistant professor of English, attended the "Teaching Narrative and Teaching through Narrative" Conference in Tampere, Finland at the end of June. The conference, sponsored by the Nordic Network of Narrative Studies, focused on current uses of narrative in teaching a variety of disciplines. Of particular interest to Downing is the use of narrative in electronic portfolios as a way for students to integrate their learning across disciplines.

Downing was among 10 faculty members selected by the UAA Faculty Technology Center to attend the EDUCAUSE Learning Initiative Annual Meeting in Austin, Texas, February 13-15. The conference titled "Taking the Pulse: Connecting, Assessing, and Innovating" focused on the latest developments in the evaluation and use of e-learning technology.

Dr. Steve Calatrello, English adjunct faculty, had an article included in an issue of Innovation Abstracts published by the National Institution for Staff and Organizational Development based at the University of Texas. The article, titled "Calatrello's Highly Unscientific Theory of Halves: A Primer for Student Success," outlines the important choices that students' make and the effect of those choices on their success.

The Hawaii International Conference on Arts and Humanities accepted KRC assistant professor of sociology, Dr. Anthony Lack's submission of, "Three Perspectives on Architecture and Existence: Paolo Soleri, John Lautner and Glenn Murcutt," for presentation at the 2012 Hawaii International Conference on Arts and Humanities.

Lack's paper, "The Tragic View in Heidegger's Writings on Ontology, Technology, and Ecology" was accepted for presentation at the International Journal of Arts & Sciences' (IJAS) National Conference for Academic Disciplines which was held at the University of Nevada Las Vegas.

Brian Partridge, KBC assistant professor of psychology, conducted a lecture on "Current Neuroscience Research on Adolescent Decision Making" in April in Homer that was also videoconferenced to Seldovia.

Dr. Catherine H. Knott, KBC assistant professor of anthropology, gave a multimedia presentation "Around the World in Eighty Minutes: Improving Your Travel Experiences with Cross-Cultural Communication" in April. It focused on improving international travel experiences and proven techniques for cross-cultural communication, with examples from India and several countries.

Three KRC English professors made a presentation on June 8 at a prestigious international conference in Vancouver, British Columbia. Associate professor of English, Janice High and assistant professors of English Scott Downing and Cheryl Siemers were speakers at the Twelfth International Conference of Diversity in Organizations, Communities and Nations. Their presentation was entitled "Transforming Place-bound to Place-rich: An Alaska College Embraces Community Diversity through Narrative in ePortfolio Collaborations." While Downing and High presented in person, Siemers used electronic means to participate, thus demonstrating the idea that in this age of E-learning, being place-bound is a thing of the past.

Mike Hawfield, KBC assistant professor of history, facilitated a 6-week classic film series, "Hollywood's Alaska" that was well attended by students and the public.

KBC Student Services coordinator Kim Frost attended the National NASPA (student affairs administrators in higher education) conference in Phoenix, AZ with around 5,000 student affairs professionals. Frost attended several round table sessions and presentations targeted for professionals from community

colleges or very small colleges and met with fellow members of the Student Affairs Partnering With Academic Affairs (SAPAA) Advising Workgroup for the first time.

Diane Taylor, KRC Learning Center programs manager, represents KPC on the newly formed Kenai Coalition for Prisoner Reentry. The purpose of this coalition is to bring representatives of various aspects of the local community (education, housing, employment, etc.) to develop strategies to promote and improve a prisoner's ability to successfully reintegrate back into the Kenai Peninsula community. This collaboration is between the Alaska Department of Corrections and the community.

Chris Stuiwe, KRC assistant professor of counseling, attended or completed the following:

- American Counseling Association annual conference
- American Red Cross Foundations of Disaster Mental Health. The training allows licensed professional counselors to volunteer during a natural disaster.
- National Coalition Building Institutes Workshop at UAA.

KPC director Gary J. Turner was named the 2012 Person of the Year by the Soldotna Chamber of Commerce at their 54th Annual Awards banquet. The award is presented to a resident of Alaska for at least 10 years who is active in many community affairs and willing to assist in organizational programs.



Dr. Paula Martin, KPC assistant director for academic affairs, had the following accomplishments:

- Co-wrote a pre-conference paper, "Meeting Institutional and Administrative Challenges of Interdisciplinary Teaching and Learning" and was an invited speaker for the Michigan State University Conference on Interdisciplinary Teaching and Learning.
- Re-drafted her chapter, "Facilitating Interdisciplinary Scholars" that will be published in the Oxford Handbook on Interdisciplinarity (paperback edition).
- Wrote a chapter, "Structural Considerations" for Interdisciplinary Hiring and Career Development: Guidance for Individuals and Institutions.
- Finished initial draft of her book, *Water Revealed: Stories from Water*.
- Presented talk at Juniata College, PA on "Strategic Considerations in Distance Education," in October 2011.

Students Making a Difference

Making a difference for students

KPC disbursed approximately \$5.5 million in financial aid and scholarship checks during the year. These are monies that students use for living and miscellaneous expenses that have a very large economic impact on the Kenai Peninsula.

KBC/UAA nursing students held a flu shot clinic for students in October that was sponsored by the Kachemak Bay Student Association.

The KRC Art Students' League 2011 Art Extravaganza was held Dec. 10 at the Kenai Visitor and Cultural Center. As usual, gourmet desserts and refreshments were featured.

KRC art student Pam Mersch, had work accepted into the 25th Annual International Exhibition on Animals in Art at Louisiana State University School of Veterinary Medicine, March 24-April 29. There were 227 artists from 40 states, Canada and Mexico who submitted 509 entries. Only 70 works were selected for the exhibition.

KRC art student Victoria Worrall received an honorable mention in the marine art competition at the Sea Life Center in Seward. The piece will travel to Washington, DC to be judged at the national level.

The Art Students' League Association participated in the KRC Club Fair with a Powerpoint presentation highlighting the most successful Art Extravaganza in KPC history. This year the Extravaganza raised more than \$3,000. The ASLA helps needy art students each semester with art supplies and also organizes workshops.

The KRC Student Union participated in the Christmas Comes to Kenai Electric Light Parade on November 25 taking second place in the organizations category. They were joined by the Seawolf Thunder Trash Can Band, KPC Director Gary Turner's festively decorated 1961 Dodge Power Wagon and the KPC Paramedic ambulance. Twenty-five students, staff and faculty participated in the parade.

KPC student services staff held a meeting for 20 KPBSD local Connections students and their parents on financial aid options and tips on applying for scholarships and writing a winning personal essay.

As part of Alaska Native/Native American Heritage Month in November, Donny Varnell, a carver from Ketchikan provided a lecture to Celia Anderson and Oluf Hartvigson's art classes. Varnell studied visual art at the University of Alaska Fairbanks and apprenticed under Haida carver Reggie Davidson in British Columbia and under his maternal aunt, Holly Churchill of Ketchikan, a cedar bark basket weaver. He was the resident carver at the Edwin DeWitt Carving Center in Saxman and has worked on totem poles under the supervision of carver Nathan Jackson. His work has been exhibited and collected around the world.

Dr. Debbie Boege-Tobin and three of her biology students gave a presentation on their service-learning mini-research projects at the April Kachemak Bay Science Conference sponsored by U.S. Fish and Wildlife Service, Kachemak Bay Research Reserve and Alaska Center for Coastal Studies.



Dr. Debbie Boege-Tobin (pictured), assistant professor of biology at KPC's Kachemak Bay Campus in Homer, and students enrolled in KBC's Semester by the Bay program were able to witness a necropsy of a rare Stejneger's beaked whale that was stranded and died Oct. 21. The carcass was donated to the campus. Tobin, her students and community volunteers buried it in horse manure on the beach. Next year it will be dug up and the skeleton will be articulated and displayed at the campus. Tobin, a lead volunteer with the Marine Mammal Stranding Network, and her students are now working on a gray whale skeleton after burying the carcass last year. The Homer Tribune ran the following article: <http://homertribune.com/2011/10/rare-whale-washes-up-at-tutka-bay/>.

KRC students Donna Schwanke-Cooper and Kathryn Thomas had work accepted into the Alaska Juried Watercolor Show. Schwanke-Cooper received an honorable mention for her work.

Claire Rowley, KRC advanced painting student, won "Best Student Work" at the UAA exhibition, "The Working Poor: Reflections on Money and Morality" held in May at the UAA Student Union Gallery. Rowley's work was in the "Harvesting the History of Work" KRC service learning exhibition at the Kenai Visitor Center. Zirus Vandevere, curator of exhibits at the center, allowed Rowley to take her work out of the exhibition a week early so she could submit it to the UAA exhibition. Rowley's "Joel and Ginni" painting won \$500 for being recognized for "Best Student Work."

KPC's Anchorage Extension Site-based Occupational Safety and Health and Process Technology programs hosted their First Professional and Internship Event Day [P.I.E. Day] at the University Center. The event was planned, coordinated and executed by the Anchorage Alaska Chapter of the American Society of Safety Engineers-Student Section. The Alaskan-based employer invitees were pleasantly surprised to find such great local potential for employees and interns. All employers expressed a continued desire to participate in future Professional and Internship Day Events.

Five KPC art students had work accepted into the Annual Juried Watercolor Exhibition at the Kenai Fine Art Center. Schwanke-Cooper won a First Prize for one of her paintings.

KRC art student Sandra Sterling had a mixed media piece accepted into the National Self-Portrait Competition, "No Big Heads," on the UAA Campus.

KRC Student Union's Halloween Trick or Treat was a huge success, with 200-250 people attending. The Anthropology Lab was the Department winner for people's choice. KRCSU also participated in the Kenai Boys and Girls Club Trunk or Treat that had 300+ participants.

The KBC Student Association student lunch program resumed in October with Vagabond Café as the new food provider. KBCSA tried a different strategy this semester, mixing up the days of the week to maximize the number of students that can partake in the free lunches.

Thirty-two students were inducted into the KRC Alpha Omega Omicron chapter of Phi Theta Kappa on Nov. 28. PTK is the honor society for two-year college students and is the largest such society in American higher education.

KRC and neighboring Alaska Christian College co-hosted the 4th annual regional Alaska Native Oratory Society on April 6 at the ACC campus. Twelve students participated in various oratory categories and the winners presented in May. ACC enrolls approximately 50 students each semester, with 95 percent of them being Alaska Native or American Indian. The two colleges have collaborated in many ways for the last 10 years.

The PRT A294 Renewable Energy Class experimented with their new combination solar-hydrogen fuel cell car. Picking a very bright sunny spring day they were able to produce hydrogen gas from the sunlight and power the vehicle for more than 5 minutes strictly using the fuel cell.

The Alaska Governor's Health and Safety Conference has been held for 31 years with numerous safety, health, and environmental tracks and vendor/exhibitor booths. A large variety of

informational safety sessions are offered to better educate the Alaskan-based employer, their safety professionals and their employees on the business of safety, health and environmental issues. Many AES Occupational Safety & Health students volunteer as "conference attendants." They perform many tasks in this role and are allowed to attend a large number of safety sessions throughout the three day conference.

The KRC Learning Center offered the "Reel Eyes" film series in collaboration with UAA's Disability Support Services. The films shown were: "Lives Worth Living," "It's Our Story," "Cyborg Revolution," and "The Brain That Changes Itself." These films represent a sampling of films by and about people who experience disabilities.

The KRC Student Union hosted their annual year-end barbecue with fresh crawdads flown in from Louisiana that were cooked by Bill Howell, KPC Student Services director. Hundreds of students, staff and faculty attended the event.

The KBC Student Association held a number of events and sponsored the following in the past year:

- Showed the "Ripple Effect" Film Series.
- Attended the UAA Governance Gathering in April.
- Provided free lunches two days a week both semesters for students.
- Hosted "Freak Film Fridays."
- Delivered the Anchorage Daily News daily to Pioneer Hall and Bayview Hall.
- Provided free swimming for students at the Homer High School pool.

Growth

Highlights

Diplomas

KPC presented 147 students college diplomas this academic year. Of these awards, 102 were considered as high demand job areas as defined by the Alaska Department of Labor and Workforce Development. Ten years ago, KPC awarded 52 in high demand disciplines, a 96 percent increase.

- 131 associate degrees
- 14 certificates
- 2 occupational endorsements
- 100+ GEDs

Minority students

A record number of minority students attended KPC this year with 547 enrolled at one of KPC's four locations. In the last 10 years, KPC's minority enrollment increased 211 percent and in spring 2012 constituted 21 percent of the KPC student body.

AK Native and American Indian students

KPC experienced another record with 271 Alaska Native and American Indian students attending the college in spring 2012. Ten years ago, 106 attended KPC, a 156 percent increase. KPC enrolls more AK Native/American Indian, Pacific Island, Asian, Black and Hispanic students than any other UAA community campus.

Veterans

In spring 2007, 28 Armed Forces veterans attended KPC while 187 chose KPC in spring 2012, a 568 percent increase.

Degree-seeking students

KPC admitted 400 new degree-seeking students in fall 2011.

Nursing information session

Marie Samson, UAA School of Nursing professor, and David Wartinbee, KRC professor of biology, held an AAS-RN information session in March that attracted 32 students. Samson stated this was the largest group ever to attend a nursing informational program conducted by UAA.

College Improvements...Looking good

The KRC Goodrich Building window replacement project was completed in October and the windows close and seal well now. The new windows improved temperature comfort in the classrooms and will save on energy costs.

KRC IT implemented a "UniPrint" system on campus that enables users to print from their wireless devices.

KRC IT will work with a vendor to install video surveillance cameras at numerous locations around campus including the new Career and Technical Center and student housing.

The four garage doors in the Ward Building were replaced in the fall semester and resulted in improved operability and improved energy efficiency.

Enrollment

KPC growth making history

For the first time in its 48-year history, KPC's enrollment in one semester exceeded 3,000 students (academic and non-credit) with 3,027 students enrolled last fall.

Since spring 2008, the number of students attending KPC has increased 53 percent.

	# Students
Spring 2008	1,988
Spring 2012	3,027

During that same five-year period, student credit hours increased 53 percent.

	Credit Hours
Spring 2008	10,263
Spring 2012	15,701



Notable Grants & Donations



KPC founding family's donation supports endowments

KPC received a generous in-kind land parcel donation appraised at more than \$246,000 from Clayton and Jean Brockel. Clayton is the founding director of KPC (established by the Board of Regents on June 1, 1964) and has been a stalwart advocate for the college for almost 50 years.

His wife, Jean has been a very active KPC supporter particularly in the arts and humanities, and teaches music courses as an adjunct for KPC. The eventual proceeds of this gift will benefit KPC by being distributed among the KPC Brockel Family Scholarship Endowment Fund, John C. Brockel Memorial Scholarship Endowment and KPC areas of greatest need.

KBC was allocated \$50,000 from the FY13 Alaska state capital budget towards its annual \$80,000 debt repayment obligation. Many thanks to Rep. Paul Seaton for his support.

KPC's annual, internal giving campaign culminated on May 11 at the KRC end-of-the-year BBQ with 63 donors participating. Thanks to all the generous staff, faculty and College Council members who participated, the amount of the donations totaled \$15,339, representing 51 percent participation, up from 46 percent last year. The totals from the last five Momentum Campaigns are shown in Table 1-1.

The 2012 total does not reflect the UAA Chancellor's matching of new donations and any amount more than a donor's previous donation, up to \$2,500. Also, it does not reflect ExxonMobile's pledged match of \$1,975 donated to the 2012 campaign via the Permanent Fund Dividend's Pick.Click.Give program. For the first time ever, KPC was able to receive donations online using a web form for donor convenience.

Online giving

KPC is the first community campus in the UA system to implement online donations. The new giving form can be seen at <http://www.kpc.alaska.edu/give>.



Table 1-1 Momentum campaign totals

Year	Amount
2008	\$9,324 from 53 donors
2009	\$13,320 from 48 donors
2010	\$16,704 from 56 donors
2011	\$12,566 from 53 donors
2012	\$15,339 from 63 donors
Five year total	\$67,253



Notable Grants & Donations, Cont.

UA SW and UAA for Program Support

DESCRIPTION	AMOUNT
UA SW Workforce Funding (TVEP) - Three Phase Separator	33,500
UA SW Workforce Funding (TVEP) - Distillation Process Unit	20,800
UA SW Workforce Funding (TVEP) - Diagnostic Otoloscope	1,586
UA SW Workforce Funding (TVEP) - HC Videoconferencing Equipment	11,300
UA SW Workforce Funding (TVEP) - Process Tech Faculty, FY11 Continuing	128,250
UAA Academic Affairs, Assessment	6,500
UAA Upgrade Instructional Classroom Technology KBC	47,800
UAA Upgrade Instructional Classroom Technology KRC	16,000
UA SW FY12 Utility Adjustment	110,700
PMED Program Support UAA/CTC	52,000
UAA Creative Writing Department Writers' Conference Support	975
UAA Diversified Action Council Mini Grants, AKNOS and Irish Musician	2,000
UAA Kenai River Campus Scholarship	3,000
UAA Kachemak Bay Final Push Scholarship	3,000
Writers' Conference Support, UAA Chancellor	5,000
UAA Nursing Program Support KRC	12,000
UAA Nursing Program Support KBC	12,000
TOTAL NEW UA FOR PROGRAM SUPPORT	466,411

New Grant Awards

DESCRIPTION	AMOUNT
NatureServe - EPA Watershed Analysis for Bristol Bay	165,000
Rotary District 5010 Rural Babies Read Project	1,500
AK State Council on Arts, Writers' Conference Support	3,500
AK Humanities Forum, Writers' Conference Support	7,000
TAACT - Beyond Anchorage, Expanding Developmental and Workforce Ed.	371,320
TOTAL NEW GRANT AWARDS	548,320

Continuing Grant Awards

DESCRIPTION	AMOUNT
Kenai Peninsula Borough Funding	657,791
Federal Dept of Ed - Title III Grant Award, Yr 4	399,456
AK Dept of Labor, Adult Basic Education (includes 40K Supplemental)	211,467
AK Dept of Labor - Workforce Investment Youth - KBC	121,000
Project GRAD - Kenai Peninsula - KBC	8,500
Project GRAD - Kenai Peninsula - KRC	9,000
TOTAL CONTINUING GRANT AWARDS	1,407,214

KPC Donations - UA Foundation

DESCRIPTION	AMOUNT
Clayton & Jean Brockel, Real Estate	267,500
Chevron USA, PRT Program Support, 5th Yr	100,000
Icicle Seafoods KBC Tech Staff & Student Support	10,000
Icicle Seafoods KBC Learning Resources Center	10,000
Icicle Seafoods Endowed Scholarship	5,000
Alyeska Pipeline Service Co. Alaska Native Students Scholarship	13,000
Leo Rhode Charitable Trust	10,128
Kachemak Bay Campus Conference Support	16,975
Individual Donations	9875
First National Bank Alaska	5000
Usibelli Foundation	1000
Alaska Community Foundation	1000
Alaska Professional Communications	100
Alaska Promise Fund/UA Foundation, Writers' Conference Support	10,000
Kenai Campus Support Fund	7,246
KRC Faculty Scholarship	2,172
KRC Staff Scholarship	1,934
Kenai River Rotary, KRC Literacy Project	1,500
Dr. Shelley A. Theno Psychology Endowed Scholarship	1,500
Kachemak Bay Campus Scholarship	1,090
Riemann Memorial Scholarship	1,085
Kachemak Bay Campus Support	1,317
Alaska Christian College Scholarship	1,000
KRC College Scholarship, Individual Donations	1,030
Kenai Historical Society, George and Mary Ford Scholarship	1,000
KPC College Council Scholarship	900
KPC Kachemak Bay Endowment	560
John C. Brockel Memorial Endowed Scholarship	500
Mary Epperson Endowment Fund	310
TOTAL DONATIONS	482,722

TOTAL NEW	1,479,918
TOTAL CONTINUING	1,407,214
TOTAL SUPPLEMENTAL	2,887,132



Summer Programs



Left: Participants in the Kenai Fishing Academy get to experience a fly out to a remote lake to practice what they learn in the classroom.



Right: Nancy Lord, Alaska's Writer Laureate for 2008-2010 and adjunct writing instructor at KBC, addresses the 2012 Kachemak Bay Writers' Conference.

For over a decade, KPC has provided summer programs that play on the strengths of each campus. In addition, summer enrollment continues to grow. Compared to the summer 2007 semester, credits are up almost 250 percent!

The Title III team hosted their 4th annual Technology Camp in May that provided faculty and staff attendees with iPads and five days of classroom technology and distance education instruction and it was a great success. Nash, Dr. Richard Webb, Andy Pfeiffer and Dr. Andy Page (formerly from UAA) planned and presented most of the five-day intensive training. Twenty-five faculty and staff were trained this year bringing the total to 64 in the four years Title III has been providing this professional development opportunity.

The 11th annual Kachemak Bay Writers' Conference, pre-conference youth workshop and post-conference session across Kachemak Bay was held June 8-14 with more than 160 participants. This year 17 nationally-

recognized novelists, essayists and poets gave workshops, readings, craft talks, panels and more. UAA Chancellor Tom Case attended and provided welcoming remarks. His office and the UA Office of Academic Affairs provided funding in support of this self-support event that continues to receive state and national recognition. Many individuals, granting agencies and businesses have provided major donations and many others have provided significant in-kind support.

KPC's Kenai Fishing Academy celebrated its 10th year of operation in June. KFA teaches people how to be better anglers by providing 20 hours of classroom instruction learning fishing techniques, wildlife safety, water safety, stream ecology, history and culture of the area and caring for your catch.



www.kpc.alaska.edu

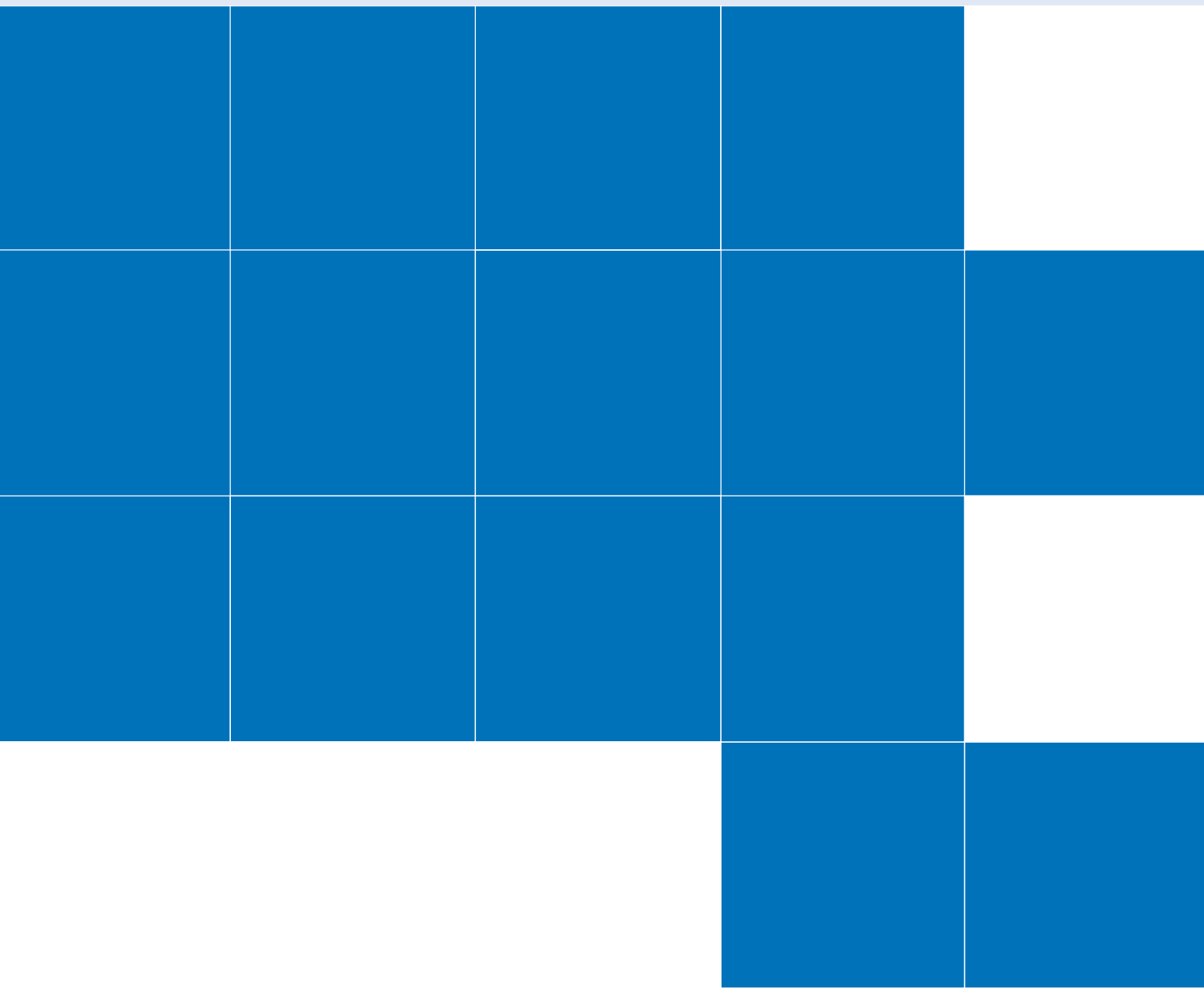
Kenai Peninsula College

Kenai River Campus
156 College Road
Soldotna, AK 99669
Tel: (877) 262-0300

Kachemak Bay Campus
533 E. Pioneer Ave.
Homer, AK 99603
Tel: (907) 235-7743

Anchorage Extension Site
3901 Old Seward Hwy
Anchorage, AK 99503
Tel: (907) 786-6421

Resurrection Bay Ext. Site
P.O. Box 1049
Seward, AK 99664
Tel: (907) 224-2285



Kenai Peninsula College
UNIVERSITY *of* ALASKA ANCHORAGE