

Alaska P-20W Statewide Longitudinal Data System

Brief to the Alaska Workforce
Investment Board

Diane Barrans

October 23, 2012

Alaska P-20W SLDS

- ▶ Project background
- ▶ Mission/objectives
- ▶ Core partners
- ▶ Governance structure
- ▶ Communication/collaboration plans
- ▶ Timeline



Project Background

- ▶ Four partnering agencies
 - Alaska Commission on Postsecondary Education
 - Alaska Department of Education and Early Development
 - Alaska Department of Labor and Workforce Development
 - University of Alaska
- ▶ Received a three-year, \$4 million grant from the Institute for Education Sciences (IES) to link Alaska's K-12 data system with postsecondary and workforce data to provide policymakers, educators, and the public needed information about program outcomes across the education and workforce systems



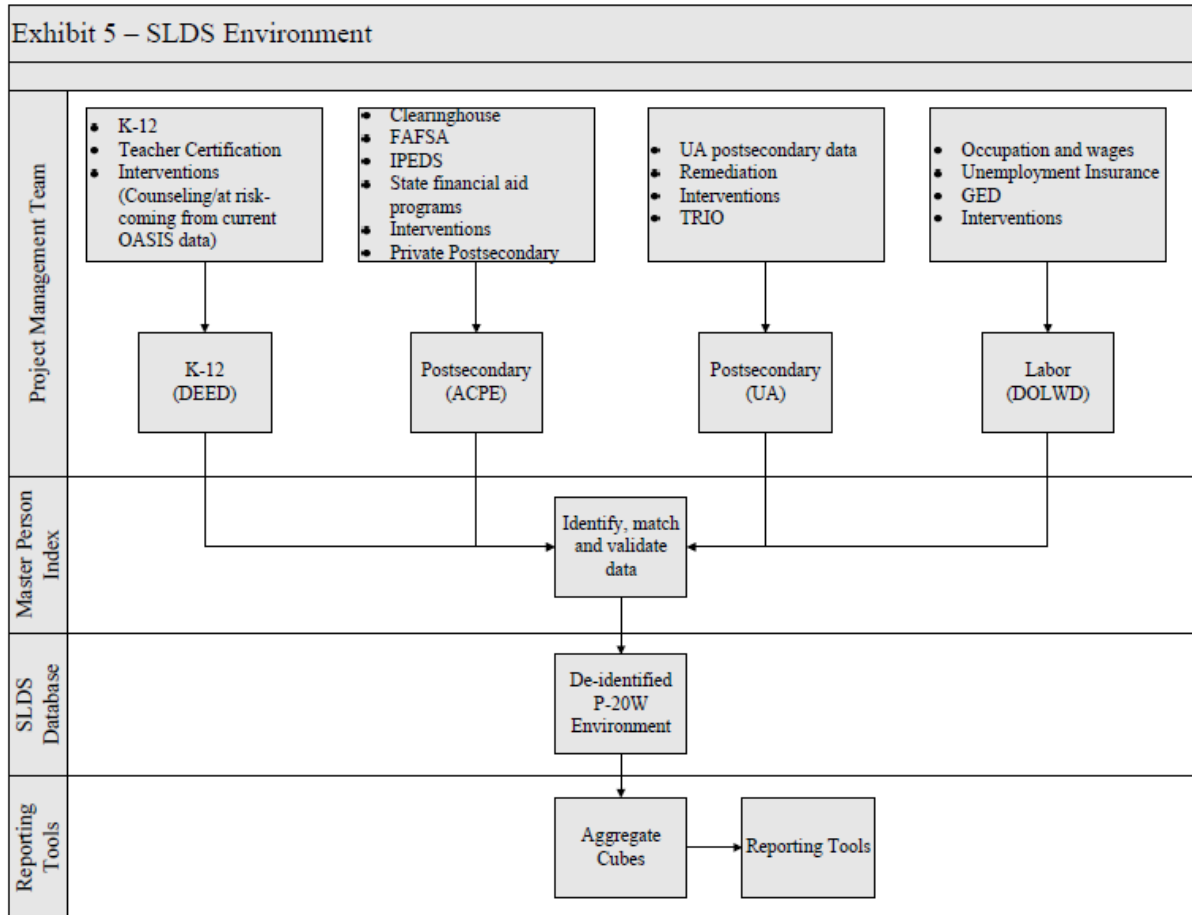
Mission/objectives

- ▶ Mission: Deliver outcomes information to Alaska stakeholders to assess, evaluate and improve the state's education and career development pipeline.

- ▶ Primary overarching goals:
 - Develop a governance team engaged in the practice of using data to inform decision-making and who understand the value of this process for the state;
 - Create a secure statewide longitudinal data system that allows de-identified data about P-20 students and their educational programs and employment to be linked accurately, securely, and confidentially to better understand and inform policy makers on the education-to-workforce cycle; and
 - Create timely reports, dashboards, and information products to support research and policy making to improve Alaska's education and workforce outcomes; and, increase transparency around educational outcomes



SLDS Mission/Objectives Overview



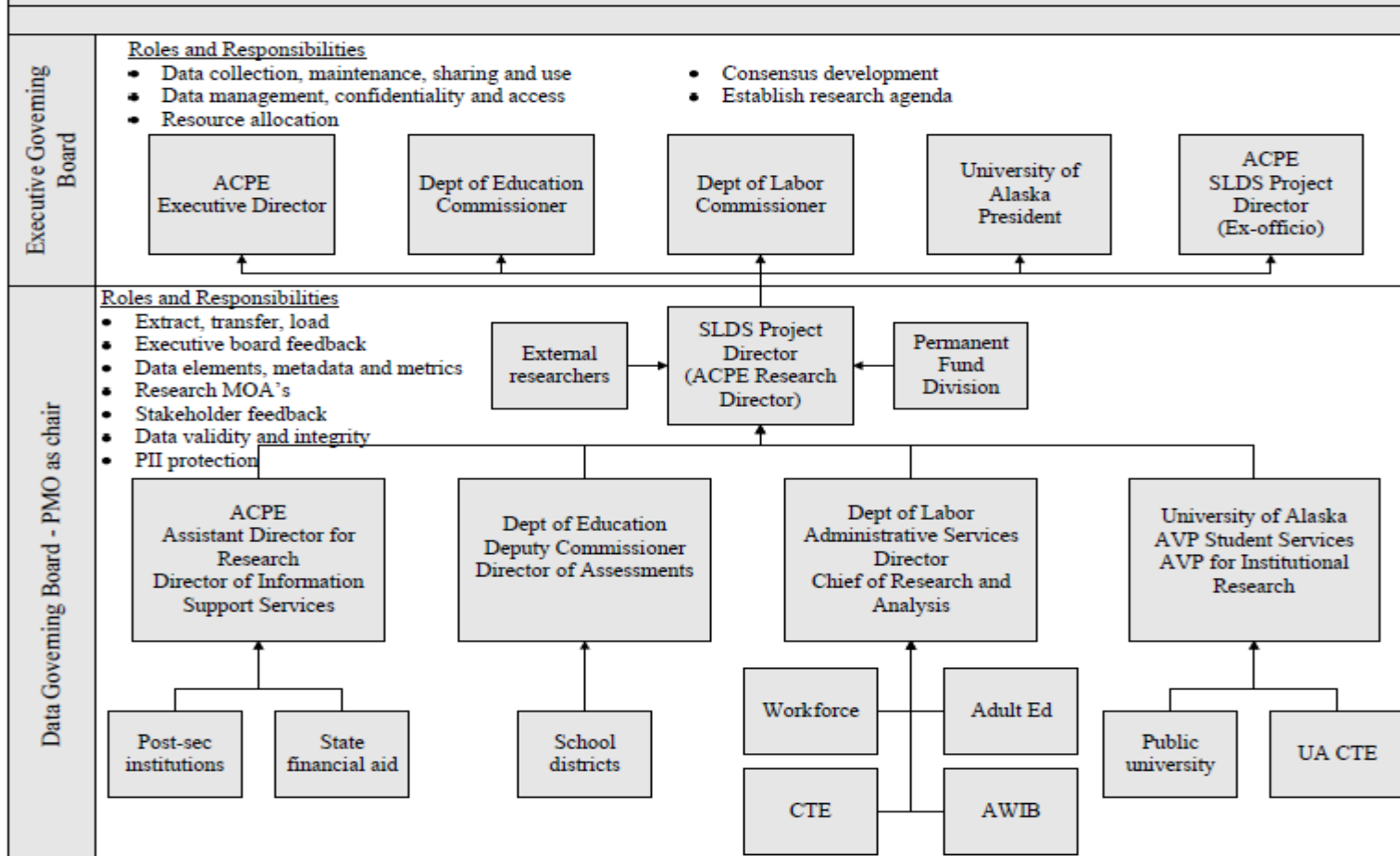
Core Partners / Governance

- ▶ Executive Governance
 - ACPE Executive Director
 - Commissioner of Education
 - Commissioner of Labor
 - President of the University of Alaska
- ▶ Data Steward Governance
 - Policy governance team
 - Technical/data governance team



Core Partner Responsibilities

Exhibit 11 – Governance Structure/Roles



Executive Governance Roles

- ▶ Determine membership, duties, authorities
- ▶ Determine how governance activities and changes to rules are submitted, considered and implemented
- ▶ Determine data access; approve user categories and associated levels and methods of data access
- ▶ Determine/approve public communications protocols
- ▶ Ensure only appropriate uses of SLDS data
- ▶ Ensure protection of PII and investigate complaints

Note: Project director and PMO staff the executive governance body



Data Stewards Governing Board

- ▶ Policy level:
 - Propose policies and implement those approved by executive body; document procedures
 - Consider information requests and implement data access rules
- ▶ Technical level:
 - Determine, define and document data elements and metadata
 - Determine technical processes/ETL protocols
 - As approved by executives, develop and deploy MOAs and associated interagency agreements



Communications/collaboration Plans

- ▶ Partners are identifying key stakeholders
- ▶ Series of surveys, interviews and statewide presentations being scheduled
- ▶ Nancy Smith, PhD, previous NCES SLDS director providing support and assistance
- ▶ Results to be reported to statewide stakeholder community



Timelines

- ▶ Six primary project phases:
 - Plan, prepare, analyze and develop methodology, governance, needs requirements and data models (7/1/12–3/31/13)
 - Procure, install and test server hardware, software, networked data storage, backup and disaster recovery solution (2/1/13–6/30/13)
 - Develop SLDS environments (7/1/13–6/30/14)
 - Identify and develop reporting platform, portal, reports and user roles (7/1/14–4/30/15)
 - Develop and deploy training protocols (1/1/15–6/30/15)
 - Develop project sustainability plan (7/1/14–6/30/15)



Contact for More Information

Kerry Thomas, P-20W SLDS Project Manager

Kerry.thomas@alaska.gov

465-6749

Stephanie Butler, P-20W SLDS Project Director

Stephanie.butler@alaska.gov

465-6743

