



## **GIVING BACK:**

organizations Princess Cruises and Holland America Line supported this quarter:

- Anchorage Veteran's Memorial Project
- First Alaskans Institute
- Civil Air Patrol
- Boys & Girls Clubs
- Glory Hole
- Denali Education Center
- Juneau Symphony
- Lee Shore Center
- Juneau Rotary
- Alaska Native Villages Association
- Southeast Alaska Independent Living
- American Cancer Society
- Ketchikan Killer Whales Club
- March of Dimes
- Rotary Club of Whitehorse
- Alaska State Firefighters Association
- Dawson City Minor Hockey Association
- Kenai Peninsula Food Bank
- Yukon Humane Society
- Whittier Fire Department
- CIRI
- Challenge Alaska
- Children's Hospital at Providence



## COMMUNITY CORNER

### Unconventional: raising eyebrows and funds

As a rule, being in jail seldom has a good end result. However, the Kenai Princess Wilderness Lodge staff in Cooper Landing tested that theory with their own twist.

As part of a fundraiser for the local first responders group, CLES (Cooper Landing Emergency Services), the maintenance staff created a "jail" during the local softball tournament. For \$5, patrons could throw someone in jail; for an additional \$5 in bail money, they could get out.

Staff also set up a dunk tank with the price of \$5 for the chance to throw three

balls at local community and business leaders brave enough to be plunged in to chilly water.

All told, 19 employees volunteered during the 10-day double elimination tournament—working concession stands, a silent auction and of course, finding "willing" participants for the dunk tank and jail. The latter two raised \$2,500; ultimately the tournament raised \$8,000 for CLES.



### Fish wheel demonstrates cultural collaboration

Over the summer, staff from the Copper River Princess Wilderness Lodge and Ahtna, Inc. saw the culmination of a two-year collaborative design — the installation of an interpretive board to accompany a full-size fish wheel. The display tells the story and use of the fish wheel, an instru-

ment used for the subsistent lifestyle practiced by many in Alaska. The collaboration is part of an overall Princess/Parks partnership in Alaska. The board was erected on the Wrangell St. Elias National Park's Visitor Center campus for the Ahtna Cultural Center.



**PRINCESS CRUISES**  
escape completely



**Holland America Line**  
A Signature of Excellence

For more information about employment opportunities in Alaska with Holland America Line or Princess Cruises, go to [alaskatourjobs.com](http://alaskatourjobs.com) or call 206-336-5876. For editorial content, contact [anelson@princesstours.com](mailto:anelson@princesstours.com)

# Journeys

Connecting Alaskans & employers with opportunities



## Tenderfoot finds her place in Southeast

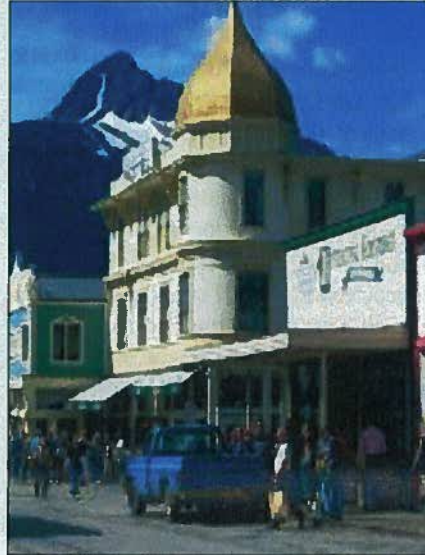
- Carlee, Passenger Services,  
Port Operations, Skagway

When my boyfriend announced over dinner that he was taking a job with Princess and Holland America to drive a tour bus in Alaska, I dropped my fork. It sounded a bit wild to me. Being a self-proclaimed "indoor person," I told him to have fun and wished him bon voyage.

I really liked him and hoped he wouldn't get eaten by a bear. He'd only been in Skagway three days when I started kicking myself: he spoke of plane rides over glaciers, sunshine until midnight, bike riding in a little town, interesting people, and snow-covered peaks shooting right out of the Lynn Canal...hmm. I decided to look up Skagway on the map; I wasn't even sure where it was.

Two weeks later I couldn't handle the stories another minute! I borrowed money from my sister and hopped on the next flight to Alaska. When I arrived in Skagway, I couldn't believe my eyes. It was truly the most beautiful landscape I'd ever seen. It didn't take long before I was hooked.

The next summer I became a driver guide. I was earning money while showing tourists this remote part of the world — what an in-



credible experience. One of my favorites? The Klondike Highway leading to the Yukon Territory — it has all the remote mystery of a true frontier. I enjoyed giving tours each day, but still being able to sleep in my own bed each evening. Skagway was a perfect location for me!

This is my fourth season in Skagway. I married that boy who had this great idea to begin with. Together we've made Skagway our summer home and have enjoyed adventures we would have never had otherwise. I am constantly surprised that even a self-proclaimed "indoor person" can find their niche in beautiful southeast Alaska.



### **FAQs: How many hours will I work?**

Most employees in Alaska work eight to 10 hours per day, five to six days per week.

Employees in Rail Services typically work a 15-hour day (e.g., employees may work two days on,

one day off, two days on, three days off). Under Alaska state wage and hour law, employees working in Alaska are paid time and a half for hours over eight in a day or over 40 in a week.



### **Off the Clock in Skagway**

**Relive the Gold Rush era**  
Celebrate the Klondike Gold Rush of 1897-98 by visiting the 15 restored buildings in the Skagway Historic District.

**Trek the Chilkoot Trail**  
Long before the Gold Rush, the trail was established by the Tlingit as a trade route in to Canada. Today, it serves as a challenging route, accessible by foot only, for hikers willing to make the 33-mile journey to follow in the footsteps of Natives and stampedees alike.

**Ride the Rails:**  
**Yukon White Pass train**  
Built in 1898, this narrow-gauge railway is a civil engineering landmark, taking you from tidewater to the White Pass Summit at the 2,865-foot level.

### **Visit us at a Job Fair!**

**Oct. 17-18 / Anchorage**  
Alaska Federation of Natives Elders & Youth conference at the Dena'ina Civic & Convention Center, 8am-5pm

**Nov. 2 / Anchorage**  
Hiring our Heroes:  
Alaska Veterans Job Fair at the University Center, 10am-3 pm



PRINCESS CRUISES  
escape completely™



Holland America Line  
A Signature of Excellence

### **For more information go to [alaskatourjobs.com](http://alaskatourjobs.com)**

alaskatourjobs.com is the portal to employment opportunities within the collaborative land operation owned jointly by Holland America Line and Princess Cruises. Both lines are part of Carnival Corporation, one of the largest vacation companies in the world. For current job listings, go to [alaskatourjobs.com](http://alaskatourjobs.com) or call 206-336-5876.



## **GIVING BACK:**

organizations Princess Cruises and Holland America Line supported this quarter:

- AVTEC - Alaska's Institute of Technology
- Juneau Chamber of Commerce
- Covenant House
- National MS Society
- Dare To Care
- Anchorage Imagination Library
- Ketchikan Convention & Visitors Bureau
- Alaska Sealife Center
- Bean's Café
- KRBD Public Telecommunications
- American Diabetes Association
- Copper River Emergency Medical Services
- Healthy Alaska Natives Foundation
- Anchorage Chamber of Commerce



**PRINCESS CRUISES**  
escape completely™

**Holland America Line**  
A Signature of Excellence

For more information about employment opportunities in Alaska with Holland America Line or Princess Cruises, go to [alaskatourjobs.com](http://alaskatourjobs.com) or call 206-336-6000. For editorial content, contact [anelson@princesstours.com](mailto:anelson@princesstours.com)



## COMMUNITY CORNER

# Costumes, charity and cold temps

A brave new wave of Holland America-Princess (HAP) employees carried on a uniquely Alaska fundraising effort last month.

In January, a five-member team leapt in to the icy waters of Resurrection Bay to benefit the American Cancer Society (ACS). In doing so, they raised \$4,961 and ranked eighth out of 32 teams. Their efforts were bolstered with an additional \$2,000 from the Princess Cruises Community Foundation.

The team was particularly inspired by those they knew affected by cancer, noting it only took a few seconds of courage to make the leap, but pales in comparison to the momentous battle cancer victims and their families face each day.

The Polar Bear Jump-Off Festival has been raising funds for ACS since 1986. This year's event raised \$173,000, which will be used to fund cancer research, education, and patient services in Alaska.



Employees posed as members of Gilligan's Island and raised nearly \$5,000 to support the American Cancer Society. From left to right: Philippe Janicka (Gilligan), Greg Vancil (Mr. Howell), Crystal Smith (the Skipper), Mark Robinson-Wilson (Ginger) and Bonnie Westlund (Mary Ann).



## FAQs:

### School ends in June - am I still eligible?

While working the entire summer season (early May through mid-September) is preferred in Alaska, many locations will hire applicants with a limited date range. Speak with the hiring manager of your desired location for more information and availability.

Also, if you are working in Alaska, state wage and hour law requires employees be paid time and a half for hours over eight in a day or over 40 in a week. Most employees in Alaska work eight to 10 hours per day.



## Princess serves as pioneer

Demonstrating its commitment to clean air, Princess Cruises ships turn off their engines when they dock in Juneau by plugging in to surplus hydroelectric power. The introduction of shore power in Juneau



demonstrates Princess' commitment to develop innovative ways to show concern for the local environment and air quality in Juneau – it was the first of its kind anywhere in the world. The concept of shore power is now being explored by other ports.

# Journeys

Connecting Alaskans & employers with opportunities



## Teen learns the ropes while earning degree

- *Alcia, Guest Services Host, Anchorage*

This summer marks my fourth season with Princess Cruises and Holland America Line. I started working with my sister when I was 16 years old. I decided to join the company because I have always been interested in the tourism industry and I wanted to find out whether or not I was interested in pursuing a career in tourism. I am now 19 and studying to earn a degree in Business Management.

The first few seasons I was scheduled in both Anchorage and Whittier. It was a perfect summer employment opportunity for me because there was a great variety from day to day.

This season I mainly work at hotels in Anchorage. I meet guests just arriving and prepare them for their land or cruise tour. I depart guests to the airports that are ending their tour. I answer questions, book tours, and solve problems everyday.

The great thing about working in the tourism industry is that every day is different. There are different guests who are arriving and departing each day. There are different



situations to handle and different questions to answer each day.

Even though I am working at the same location every day, it is never monotonous or boring because there is always something to do.

My favorite part about working at the hotels is that I have the opportunity to impact a guest's tour and their impression of the company. I see guests a number of times throughout an evening and we have the chance to speak with them and get to know them as well.

If a guest has an issue they need assistance with, I have the time and the resources to assist them. The service we provide each individual passenger at the different hotels has a major impact on a guest's overall tour experience.



## Off the Clock In Southcentral

**Hit the Glen Alps Trailhead:** Enjoy an invigorating yet short 1.5 mile hike to the summit of Flattop Mountain. The view of Anchorage and the surrounding countryside can't be beat, and you'll be home in time for dinner.

**Ride the waves:** Looking for a Class V challenge? Get ready for Six Mile Creek, one of the area's most popular white water rafting destinations. Three canyons, titillating drops, heart-pounding rapids... you might want to stock up on adrenaline before you strap in.

**Hook a big 'un:** If you're an angler, it doesn't get much better than Bird Creek. Down in Chugach State Park, the creek is surrounded by glorious Alaskan forests and is overflowing with silver, pink and chum salmon.



Rachel Calderwood and Sadie Toberer tout positions at a job fair last month in Fairbanks.

## Visit us at a Job Fair!

### April 9: Seward

Alaska Vocational & Technical School, 12:30 - 3 p.m., at the AVTEC Student Center

### April 17: Anchorage

UAA Seasonal & Part-time Employment Fair, 10 a.m. - 3 p.m., at the University of Alaska Anchorage



PRINCESS CRUISES  
escape completely

Holland America Line  
A Signature of Excellence

## For more information go to [alaskatourjobs.com](http://alaskatourjobs.com)

[alaskatourjobs.com](http://alaskatourjobs.com) is the portal to employment opportunities within the collaborative land operation owned jointly by Holland America Line and Princess Cruises. Both lines are part of Carnival Corporation, one of the largest vacation companies in the world. For current job listings, go to [alaskatourjobs.com](http://alaskatourjobs.com) or call 206-336-6000.